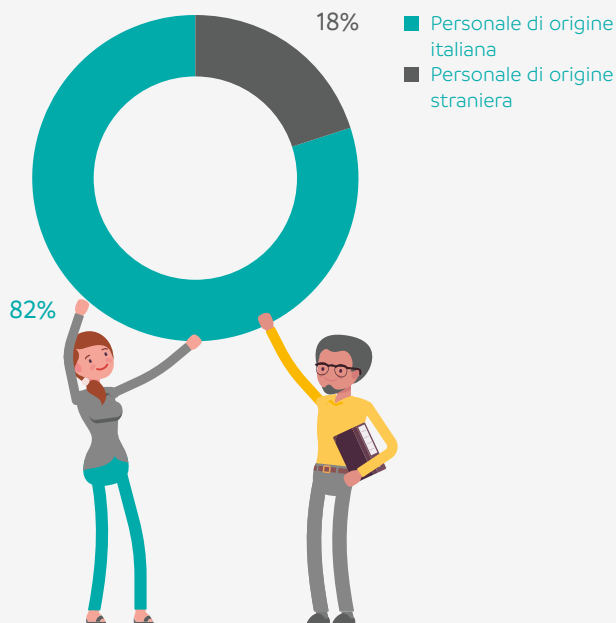
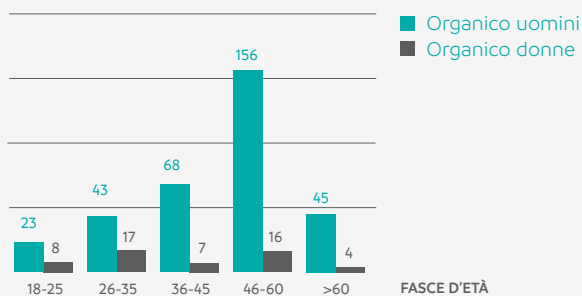
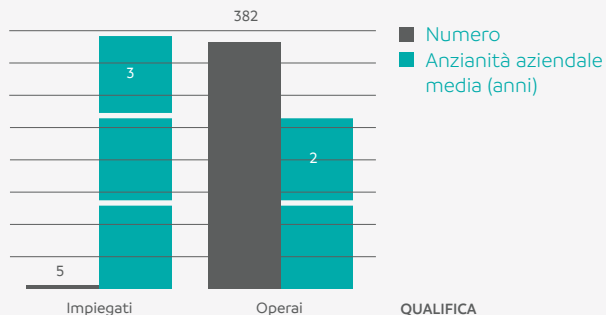


Riesame SA8000:2014 | riferimento anno 2021

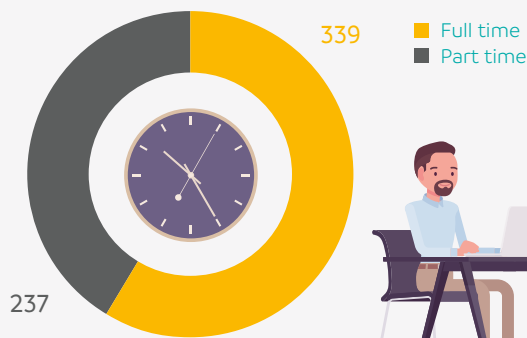
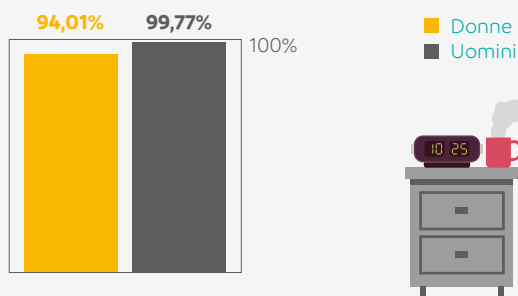
Servizio qualità e ambiente

ORGANICO (CALCOLATO AL 31.12.2021)

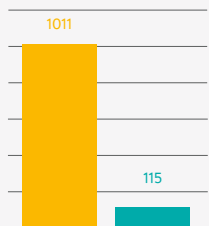


ORARIO DI LAVORO

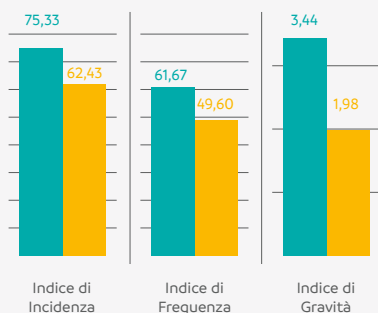
Rapporto ore di ferie godute/maturate



FORMAZIONE SICUREZZA



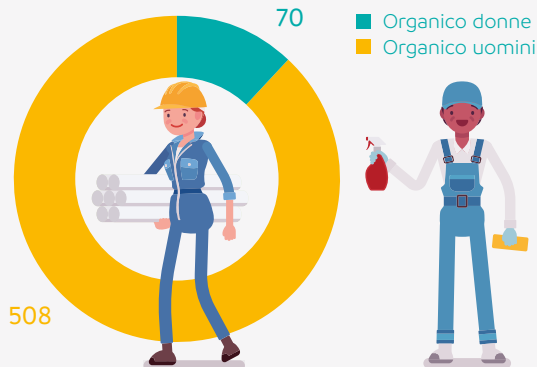
INFORTUNI



■ Ore complessive
■ Dipendenti formati

■ 2020
■ 2021

DISCRIMINAZIONE



L'azienda non pratica né sostiene alcuna forma di discriminazione in fase di assunzione. La preponderanza di personale maschile è dovuta alla tipologia del settore.